

Tell me about the Neighbourhood.....

Wellington

Wellington is a beautiful harbour city centred on a vibrant business district and surrounded by the hills of Wellington's Town Belt - a reserve encircling the city. From the city centre it is only a quick drive to mountains, open countryside and rugged coastlines.

Wellington's compact city centre supports an arts scene, café culture and nightlife much larger than most cities of a similar size.

Recently Wellington was awarded the **12th best quality of living** in the world, according to a 2006 study by consulting company Mercer. Of cities with English as the primary language, Wellington ranked fourth.

Wellington stands at the south-western tip of the North Island on Cook Strait, the passage that separates the North and South Islands. It is more densely populated than most other settlements in New Zealand, due to the small amount of building space available between the harbour and the surrounding hills. Close to 460,000 people make their home in the greater metropolitan area.

More than most cities, life in Wellington is dominated by its central business district (CBD). Approximately 62,000 people work in the CBD, only 4,000 fewer than work in Auckland's CBD, despite that city having three times Wellington's population.

Evans Bay

Evans Bay is one of the most convenient locations it is possible to find in Wellington City. The suburb of Kilbirnie with its two supermarkets, cafes, shops and recreational facilities is right on its doorstep. The recently upgraded Aquatic Centre is within walking distance. Further south is the popular surf beach of Lyall Bay and the Maranui Surf Club where you can watch the surf breaks roll in.

Step across the road and it's a water-lover's playground – a safe, sheltered bay for swimming, yachting, windsurfing and kayaking. There are many areas of natural beauty to enjoy – walking, running or just watching the dolphins in the harbour. It's hard to believe that Wellington City is just 5 minutes drive away, via scenic Evans Bay Parade.



Economy

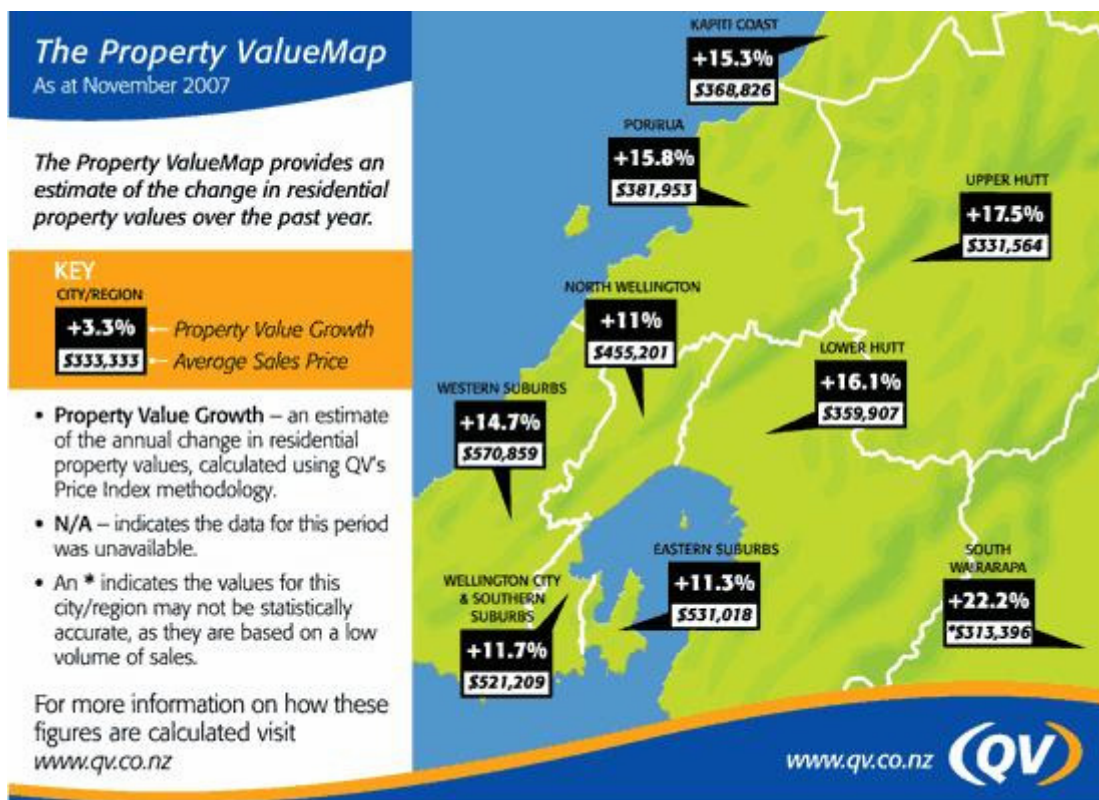
As New Zealand's political centre, Wellington houses Parliament and the head offices of all government ministries and departments, plus the bulk of the foreign diplomatic missions based in New Zealand.

Over the past five years Wellington has shown the highest figures in national employment growth which are being driven by property and business services, the core government sector, construction and retail trade. Wellington also boasts the highest median household incomes in New Zealand.

Property Market

Property values in the Wellington region increased by 13.6% over the past year (calculated over the three months ending November 2007 in comparison to the same period last year), down from 15.9% reported last month. The average sale price for the region recorded a decrease of \$12,800 from last month to \$425,429.

The residential market in the Wellington region remains buoyant with annual growth recorded at higher levels than the National Average and the Auckland region. Our expectation is that the market will continue to increase in the region.



Climate

Wellington has few climate extremes, with the most settled weather occurring during summer and early autumn. Typical summer daytime maximum air temperatures range from 19°C to 24°C, and seldom exceed 30°C. Annual sunshine hours average about 2000 hours, more than many of the other major centres.



Winter is normally the most unsettled time of the year. Typical winter daytime maximum air temperatures range from 10°C to 14°C. Frost occurs inland during clear calm conditions in winter.

Because of its location in the roaring forties latitudes and its exposure to omnipresent winds coming through Cook Strait, the city is known to Kiwis as "Windy Wellington".

Transport

Wellington is serviced by a bus and rail network, and a daily ferry service takes people across Cook Strait to the South Island.

More people use public transport in Wellington than anywhere else in New Zealand. About 26,000 people commute into the City every working day.

In Wellington 28% of people use public transport compared with 18% in Auckland and 9% in Christchurch.



Visitors' Attractions

Wellington is built in a hilly amphitheatre around a fine, deep harbour, and is surrounded by natural beauty. The central city is home to many theatres, galleries, festivals, restaurants and shops.



The wider region offers unlimited recreational and sporting activities from mountain biking to fishing. Snow skiing is just four hours' drive away. The wine-growing districts of Martinborough and Hawke's Bay are each just a short trip north.

Wellington is also a natural gateway to the South Island. Daily ferry services provide access to the stunning Marlborough Sounds region, the fine arts district of Nelson and the many boutique wineries of Marlborough.

Helpful links

Please click on the below links for more information on Wellington

www.wellingtonnz.com

www.wellington.govt.nz

www.wellington.net.nz

www.wellington.nz.com